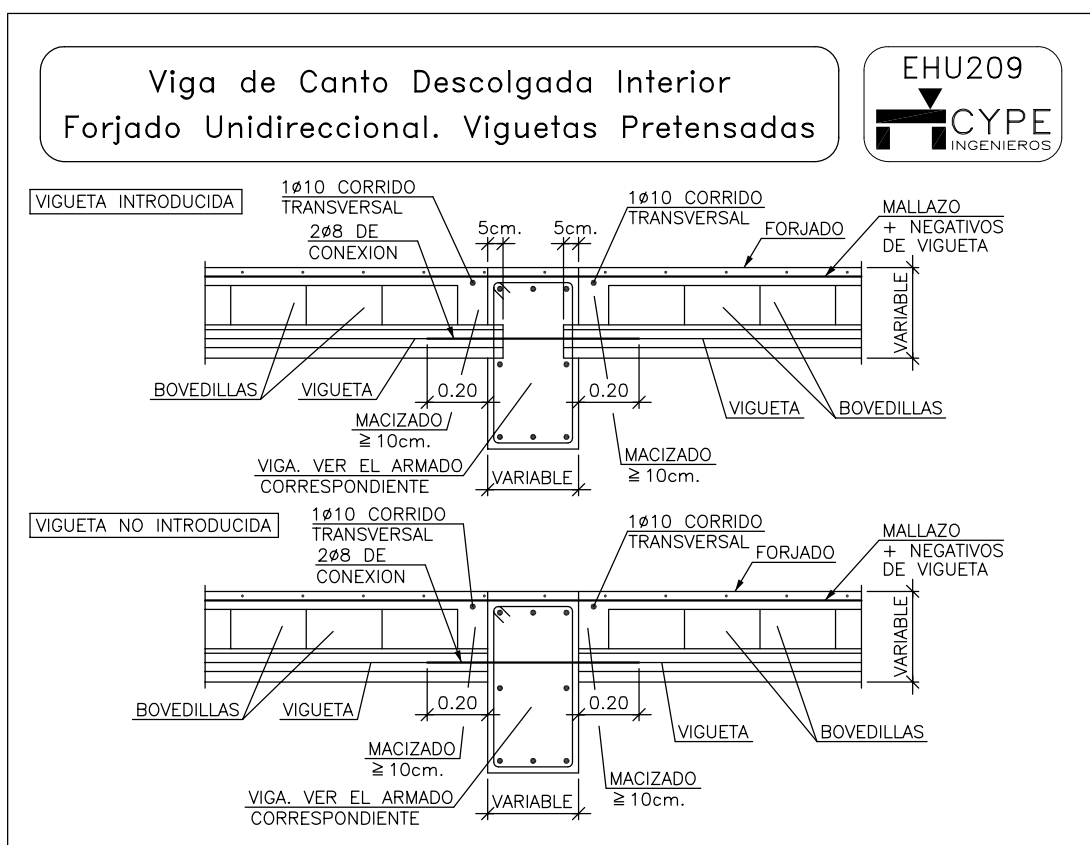
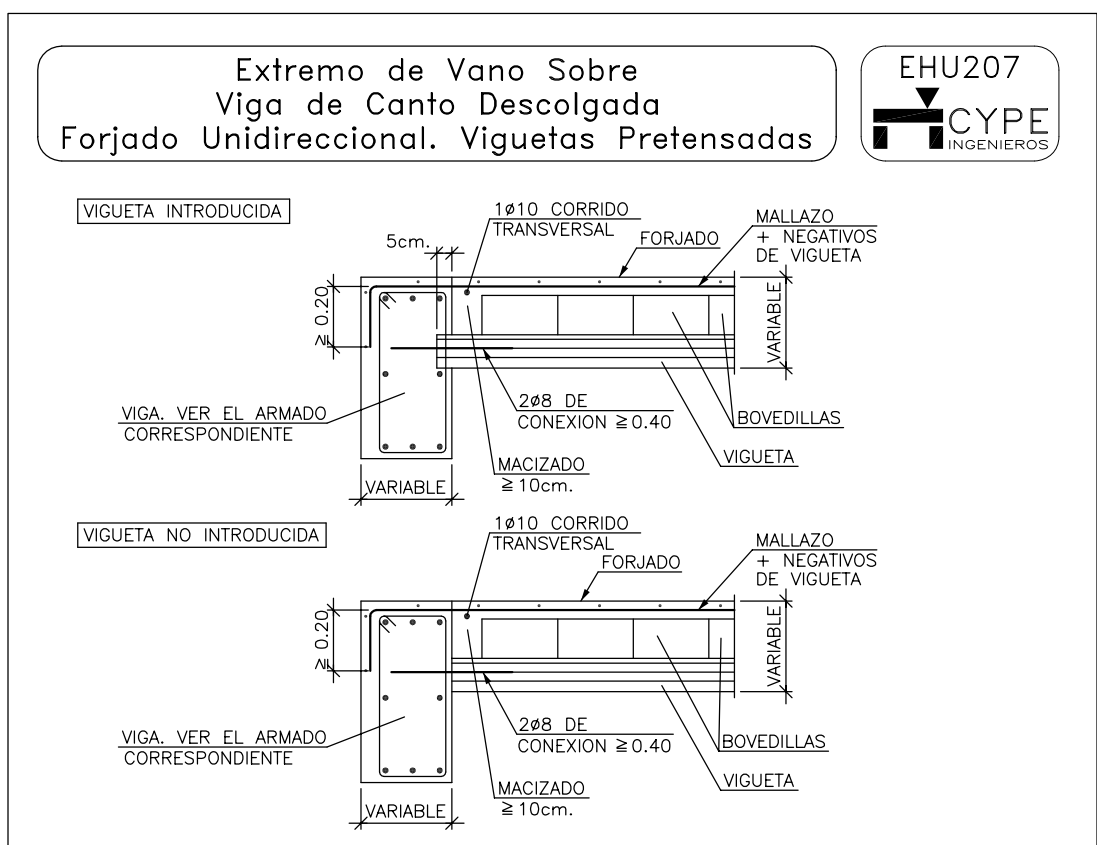
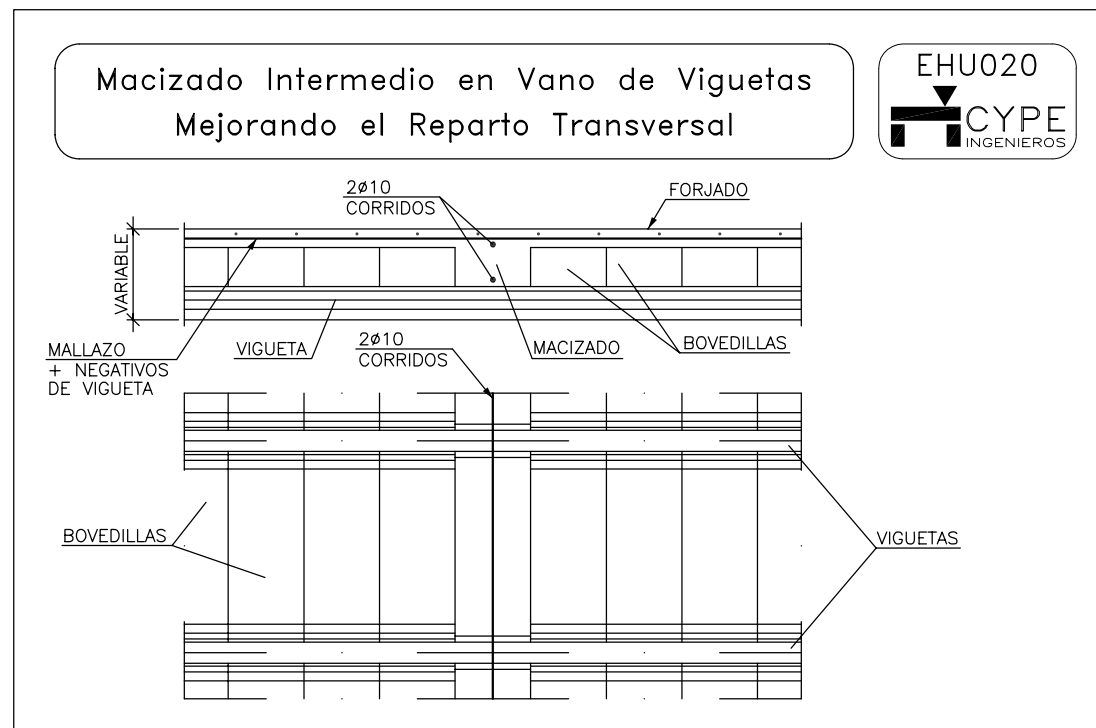
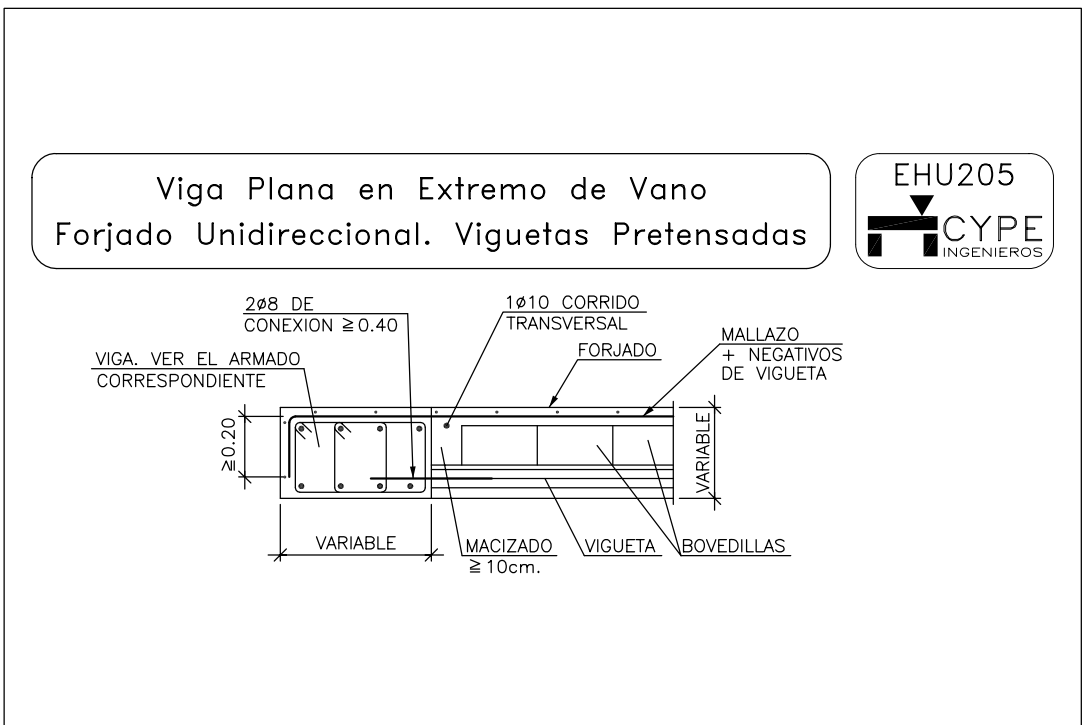
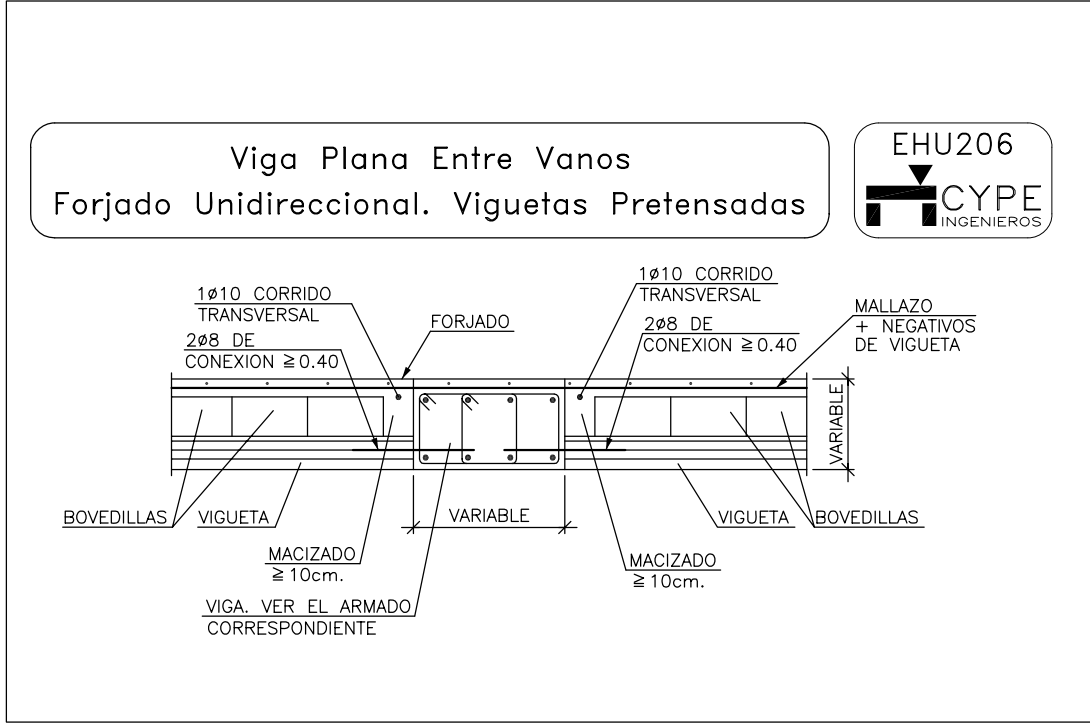
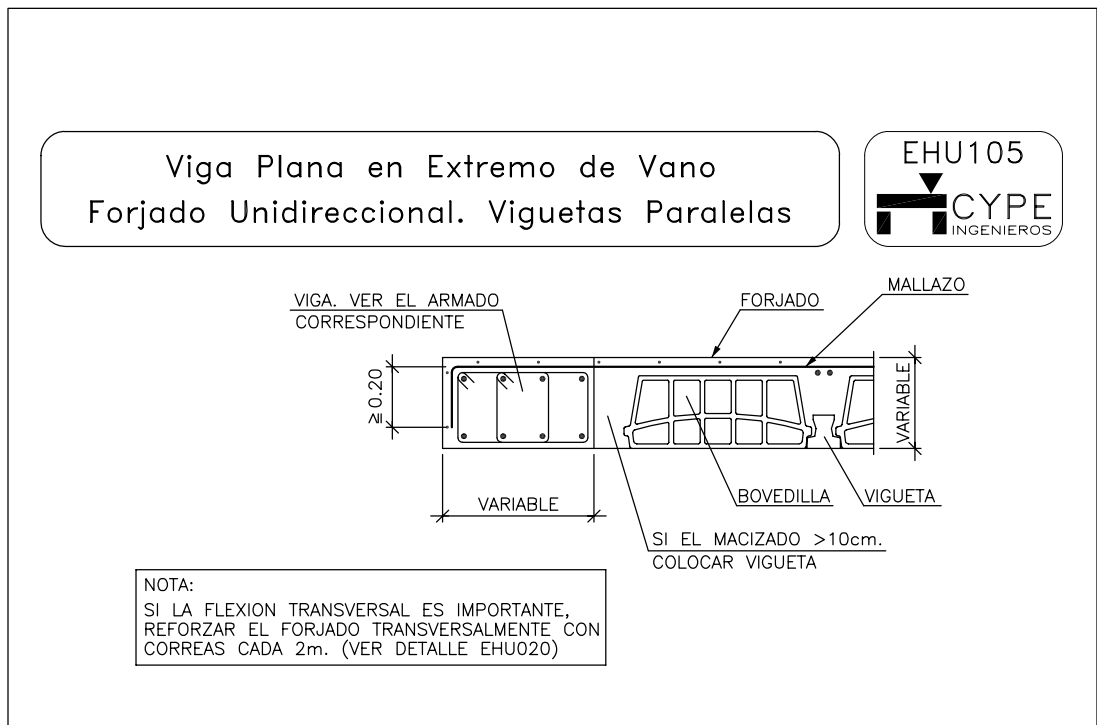


**Transición a Losa Maciza de Menor Canto en Voladizo Enrasada Superiormiente. Forjado Unidireccional. Viguetas Pretensadas**

Technical drawing showing the transition to a smaller cantilever slab (Losa Maciza de Menor Canto) in a cantilevered, top-slabbed, unidirectional casting (Forjado Unidireccional) using prestressed beams (Viguetas Pretensadas). The drawing includes dimensions and reinforcement details:

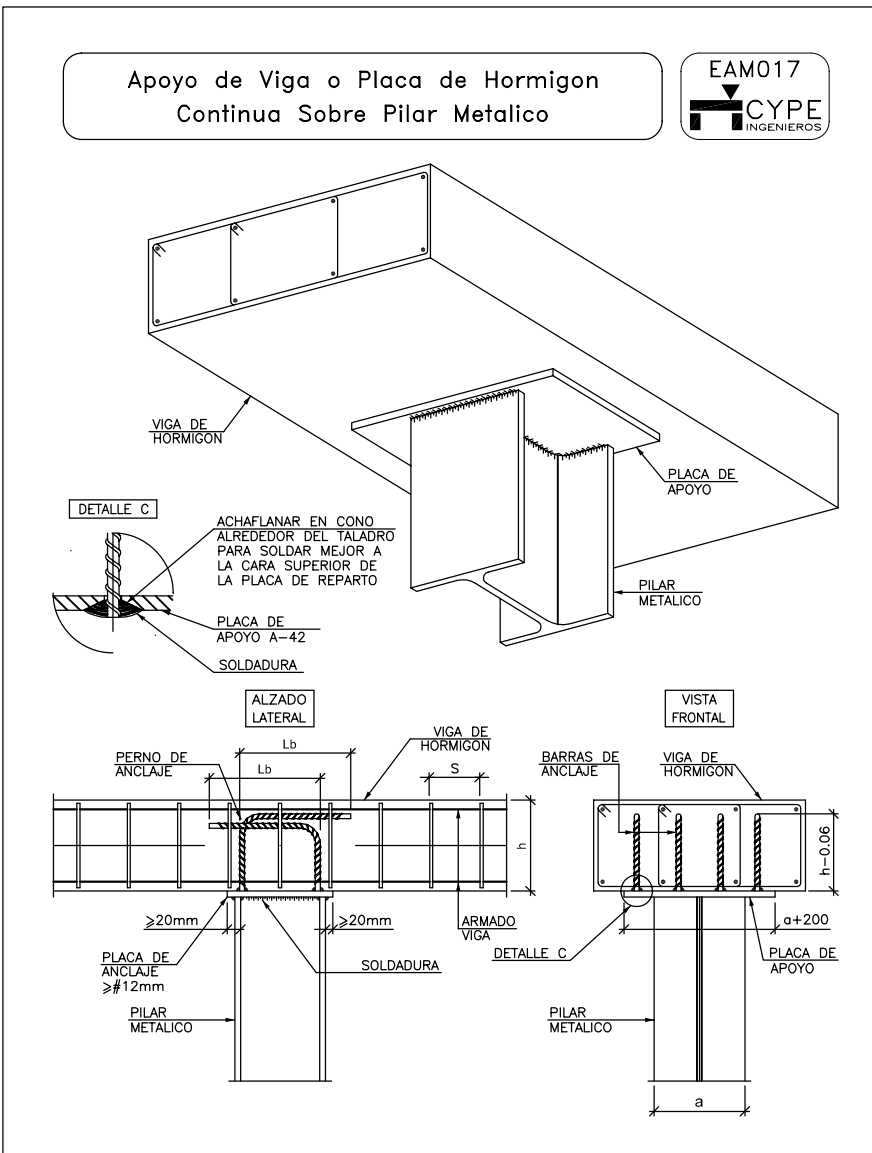
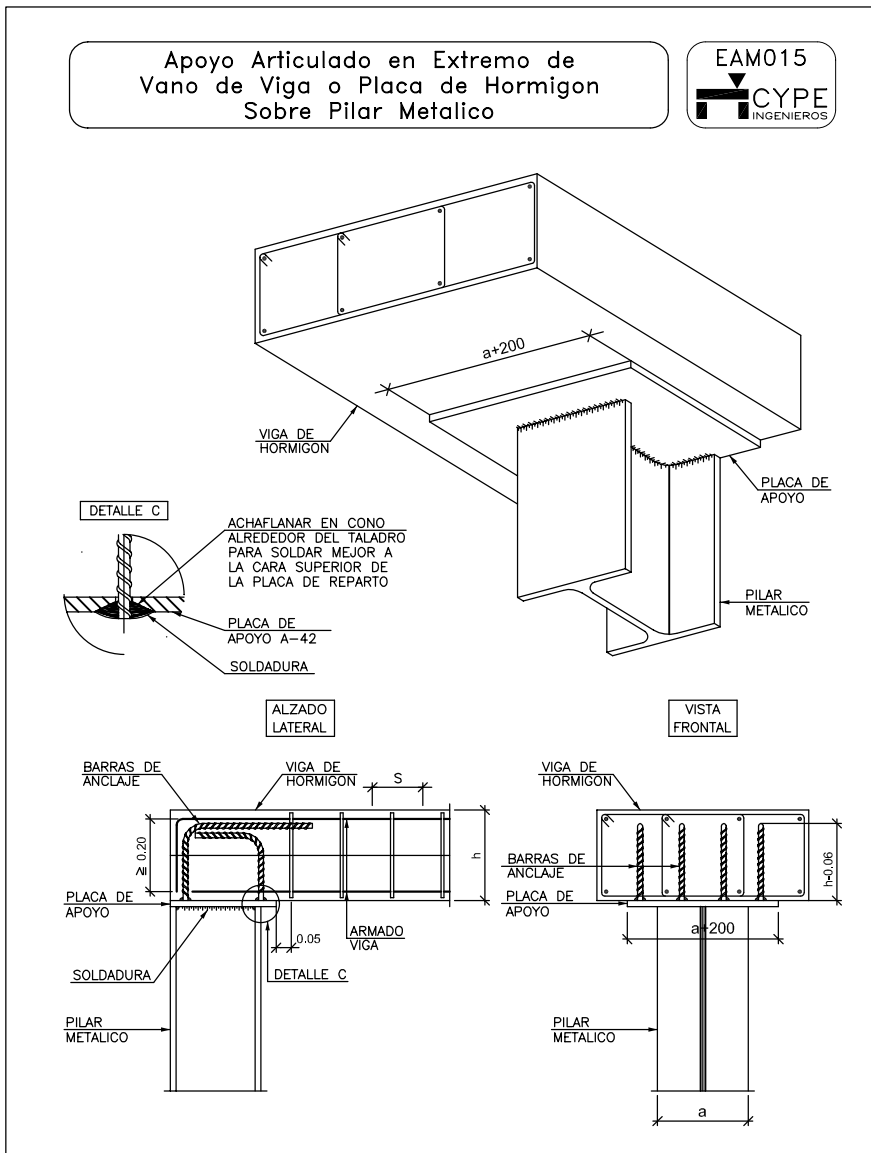
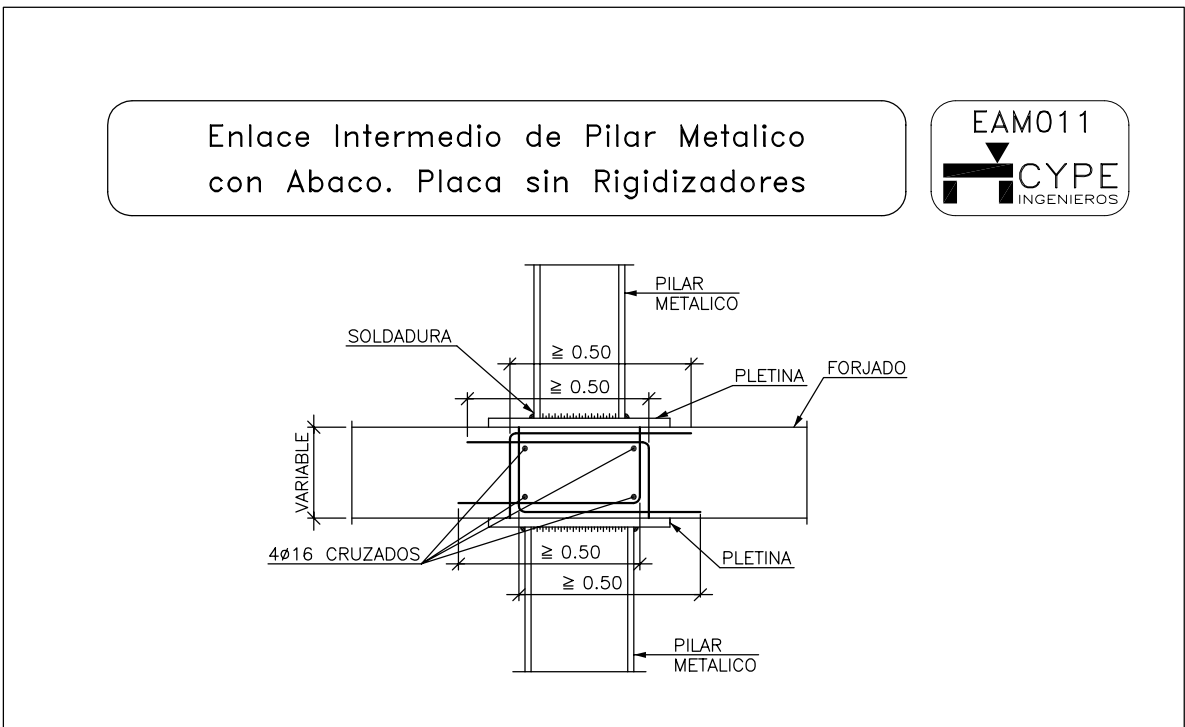
- Dimensions:**
  - $L_b$ : Length of the beam.
  - $V$ : Length of the slab.
  - $\geq V$ : Minimum length of the slab.
  - $\geq 1m$ : Minimum length of the slab.
  - $\geq 10$  CORRIDOS TRANSVERSAL: Transverse spacing of reinforcement.
  - $\geq 10cm$ : Minimum length of the slab.
  - $\geq 0.15$ : Minimum length of the slab.
- Reinforcement Details:**
  - FORJADO**: Casting reinforcement.
  - LOSA**: Slab.
  - REMATÉ LOSA**: Slab finish.
  - ARM. LOSA**: Slab reinforcement.
  - VIGUETA**: Prestressed beam.
  - BOVEDILLAS**: Beams.
  - 2ø8 DE CONEXION**: Reinforcement connection.
  - VIGA NORMALMENTE ENTRE PILARES, VER EL ARMADO CORRESPONDIENTE**: Normal beam between columns, see corresponding reinforcement.



Dimensiones Placa = 200x200x12 mm ( S275 )  
 Pernos = 4Ø10 mm, B 500 S, Ys = 1.15  
 Ref. pilares : P19=P20=P21  
 Escala 1 : 20

The diagram shows three views of the base plate assembly:

- Front Elevation:** A rectangular plate with a central square opening. The overall width is 200 mm and height is 200 mm. The central opening has a side length of 110 mm.
- Side Elevation:** Shows the profile of the plate with a thickness of 12 mm.
- Perspective View:** A 3D representation of the plate with four Ø10 mm bolts arranged in a square pattern around the central opening.

[illegible]